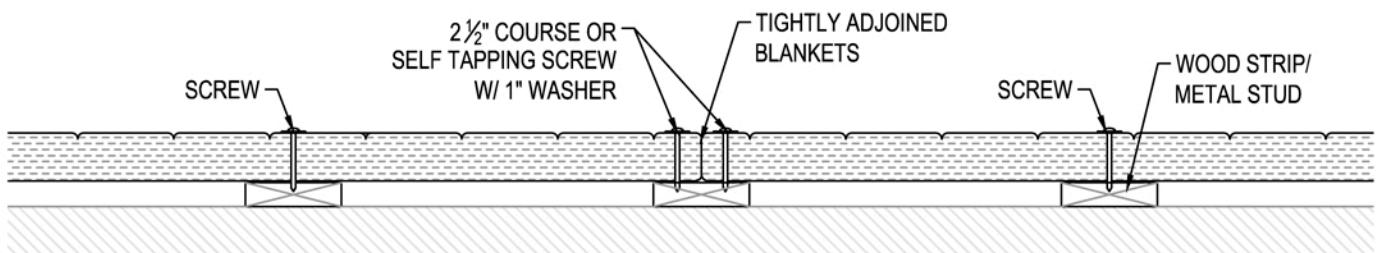


1 INSUL-QUILT BLANKET END JOINT

Scale: 1 1/2" = 1'-0"



2 INSUL-QUILT BLANKET OVERLAP @ 4'-0" WIDTH

Scale: 1 1/2" = 1'-0"

NOTES:

1. COURSE SCREWS ARE TO BE LOCATED @ 16" O.C. HORIZONTALLY AND 24" O.C. VERTICALLY.
2. TIGHTLY ADJOIN BLANKETS WHERE THEY MEET