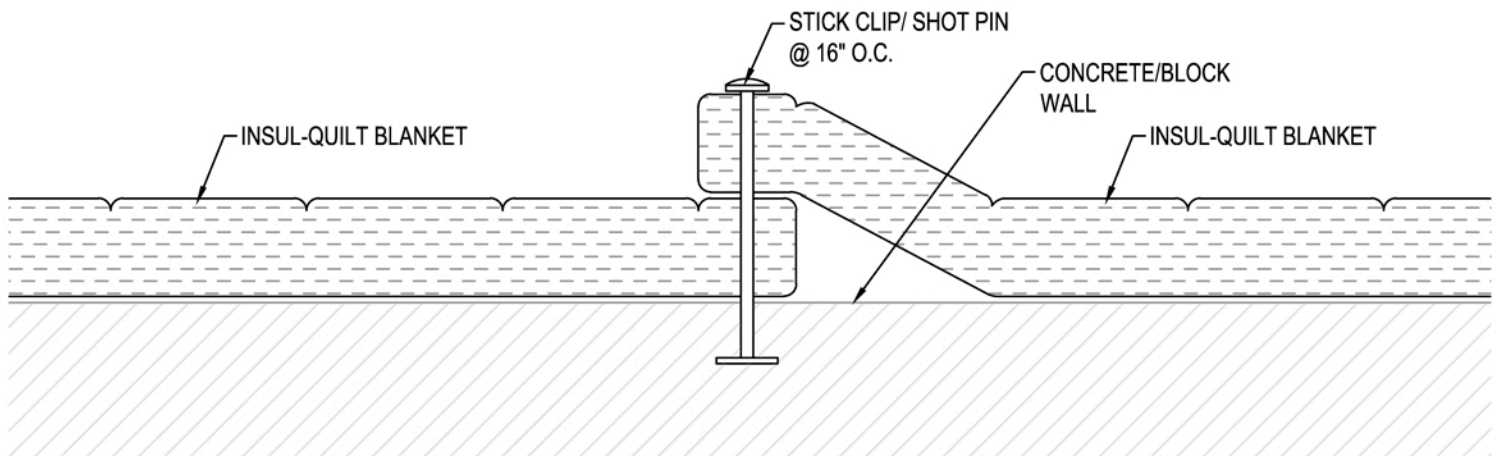


1 INSUL-QUILT BLANKET END JOINT

Scale: 3"=1'-0"



2 INSUL-QUILT BLANKET OVERLAP @ 4'-0" WIDTH

Scale: 3"=1'-0"

NOTES:

1. STICK CLIPS/ SHOT PINS ARE TO BE LOCATED @ 16" O.C. HORIZONTALLY AND 24" O.C. VERTICALLY.
2. AT THE LAP JOINT THE STICK/ SHOT WILL BE COMMON THROUGH TWO BLANKETS (SEE DETAIL).